



Name: _____

The Cold Facts

An overnight snowstorm is big news in Deersprings Valley. Scarlett Squirrel and her team of reporters at *The Treetop Tribune* have to separate **FACT** from **OPINION** to tell the story. And they need some help from **YOU** to do so!

A **FACT** is something that can be proven true. An **OPINION** is how someone feels about something.



The Treetop Tribune

OVERNIGHT STORM LEAVES VALLEY COVERED IN SNOW

By Roscoe Rabbit, Staff Reporter

DEERSPRINGS VALLEY – An overnight winter storm brought frigid temperatures to the valley last night. A low temperature of 4 degrees Fahrenheit was recorded by Oswald Owl at 3:35 a.m.

Icicles in the entry way of the Chipmunk family caused them to seek shelter in a neighboring tree.

“It was the scariest storm ever,” said Chuck Chipmunk. “The winds sounded like an angry, howling wolf!”

The storm blew in from central Canada and knocked out power in the town of Riversburg for several hours. But by 10:00 a.m., winds had stopped and sunshine was slowly returning to the valley.

Once the storm ended, a team of woodpeckers began to chip away at the icicles covering the Chipmunk family’s doorway, and the family was able to move back home in their tree before nightfall.

LAK AND

Green me
and the tre
lake with
on Wed

Local trou
would be s
for the en
without a

Water leve
rainfall an
ponds wi
tributari
streams
who are a

Wor

Name: _____

Just the Facts

Scarlett knows how important it is to include as many facts as possible in a news story. These facts give readers more understanding of what happened and why.

Look at the article about the storm. Does it tell **WHO**, **WHAT**, **WHEN**, **WHERE** and **WHY**?

WHO: _____

WHAT: _____

WHERE: _____







WHEN: _____

WHY: _____

Take a Survey

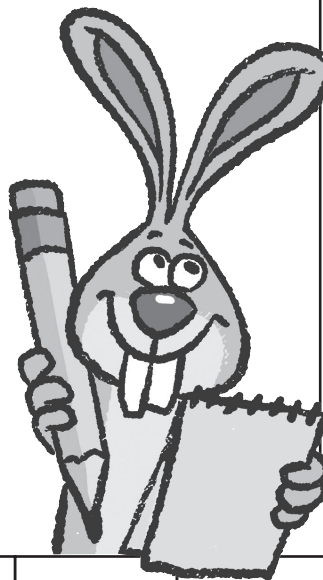
A **survey** is a way to gather opinions about something.

Ask your friends and family members which of these veggies they like best. Complete the graph by coloring in a square each time someone selects that vegetable. Share your findings with everyone who took the survey.

CARROTS 	POTATOES 	TOMATOES 	CELERY 	BROCCOLI 	GREEN BEANS 

Reporter's Notes

Roscoe Rabbit is a new reporter at the Treetop Tribune. He made a list of facts about the big storm in his reporter's notebook, but is he correct? Circle the **FACTS** in green crayon. Underline the **OPINIONS** in red crayon.



The heavy snowfall caused several tree branches to break.

The sound of the howling wind was scary.

Chuck Chipmunk's family had to seek shelter in a different tree when their nook started filling with ice.

The storm brought four feet of snow and temperatures fell to 4 degrees Fahrenheit.

The deep snow looked beautiful in the morning.

There will never be another storm like this in the Valley.

Parts of Critter Creek were frozen solid by 3:30 a.m.

Name:  **Kid Scoop Together****Missing Words**

Replace the missing words to complete the article below.

- CORRECT** **EVENT** **MORNING** **UNDERSTAND** **COVERAGE** **BURROW** **WEATHER** **NAMED**

Early in the _____ every February 2, attention turns to Gobbler’s Knob, Pennsylvania, and a groundhog _____ Punxsutawney Phil.

Legend states that if Phil sees his shadow when coming out of his _____, it means he predicts six more weeks of wintery _____. But if he doesn’t see his shadow, it means Phil predicts an early spring, according to the legend.

It’s a big _____ that began in the late 1800s and gets lots of _____ in the news. Phil’s predictions are not always _____. But that’s okay, because it’s all in the spirit of fun.

A group of people called the “Inner Circle” dress up in long black coats and top hats for the big Groundhog Day announcement of Phil’s prediction. The president of the Inner Circle is said to speak *groundhogese* and is the only one who can _____ what Phil says.

**Fact Finder**

Find three facts and three opinions in the newspaper. Have three friends take turns deciding which statements are facts and which are opinions. Each correct answer earns 1 point.

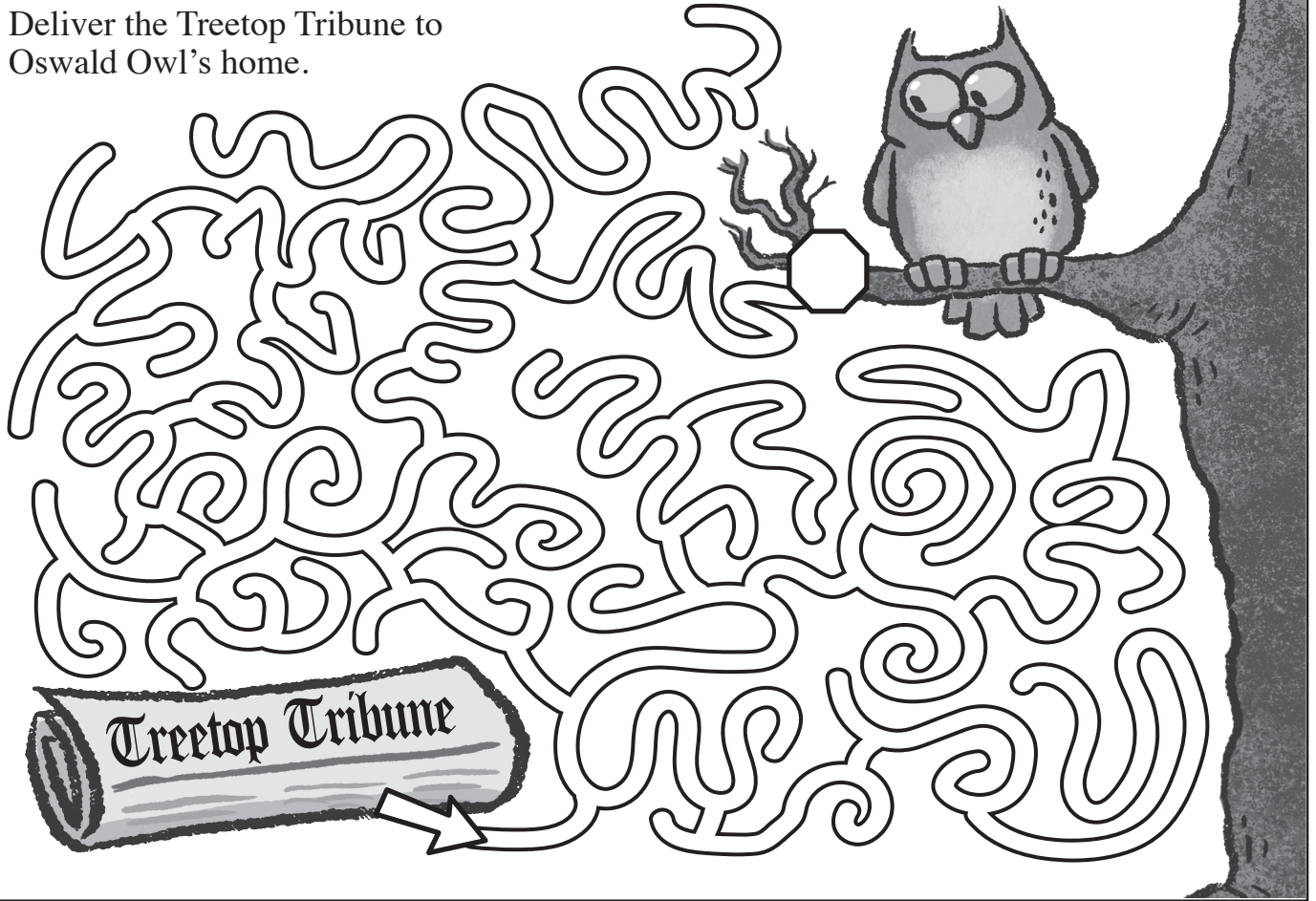
Standards Link: Students correctly identify the differences between fact and opinion.



Name: _____

Puzzler

Deliver the Treetop Tribune to Oswald Owl's home.



◦ VOCABULARY BUILDERS ◦

PROVEN

The word **proven** means something that has been shown to be true or correct.

In our courts, people are considered innocent until **proven** guilty.

Try to use the word **proven** in a sentence today when talking with your friends and family members.



Why can you never finish an argument with a cloud?



ANSWER: Because the cloud will just storm out on you.



Name:

Kid Scoop Jumbo Word Search

Find the words by looking up, down, backwards, forwards, sideways and diagonally.
Then see how many of these words you can find in today's newspaper.

BLEW

BREAK

FACTS

FRIGID

ICE

LOW

OPINION

SEEK

SNOW

STORM

TREE

VALLEY

WIND

WINTER

WOLF

A F Y W L C I W T M

Q B A J I R V M R O

D L M C R N V O E P

I B E Y T M T W E I

G R W X W S E E K N

I E G O J I S L R I

R A V Q L Y N B W O

F K A B I F O D U N

V A L L E Y W J P S

Standards Link: Letter sequencing. Recognized identical words.
Skim and scan reading. Recall spelling patterns.



Name: _____

Answers

Page 2

The heavy snowfall caused several tree branches to break.

The sound of the howling wind was scary.

Chuck Chipmunk's family had to seek shelter in a different tree when their nook started filling with ice.

The storm brought four feet of snow and temperatures fell to 4 degrees Fahrenheit.

The deep snow looked beautiful in the morning.

There will never be another storm like this in the Valley.

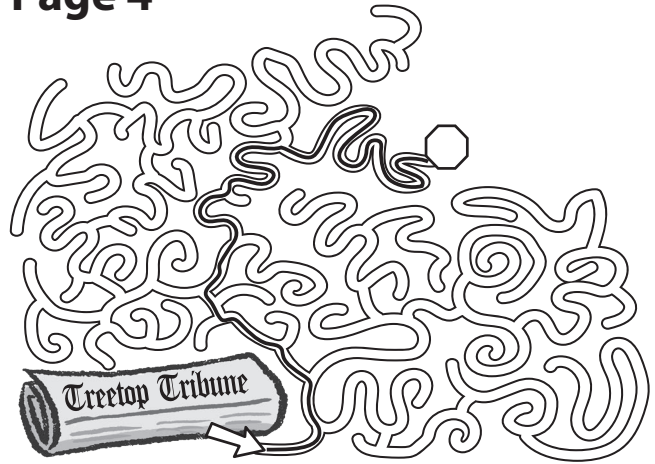
Parts of Critter Creek were frozen solid by 3:30 a.m.

Page 3

Missing Words

- morning
- named
- burrow
- weather
- event
- coverage
- correct
- understand

Page 4



Page 6

